

# Alger SICAV - Alger Dynamic Opportunities Fund



As of 30 November 2023

## Advisor

Fred Alger Management, LLC

## Sub-Advisor

Weatherbie Capital, LLC

## Investment Strategy

A long/short hedged equity strategy seeking long-term capital appreciation and lower volatility by primarily investing in long and short positions in equity securities.

## Portfolio Management

### Dan Chung, CFA

Chief Executive Officer, Chief Investment Officer  
29 Years Investment Experience

### Gregory Adams, CFA

Senior Vice President, Portfolio Manager and Director of Quantitative & Risk Management  
36 Years Investment Experience

### H. George Dai, Ph.D.

Chief Investment Officer, Senior Portfolio Manager  
24 Years Investment Experience

### Joshua D. Bennett, CFA

Chief Operating Officer, Senior Portfolio Manager  
23 Years Investment Experience

### Daniel J. Brazeau, CFA

Senior Managing Director, Portfolio Manager  
23 Years Investment Experience

## Benchmark

S&amp;P 500

Class	ISIN	CUSIP	SEDOL	NASDAQ
A EU	LU1232088200	L0163W406	BF1FXZ4	ADAEX
A EUH	LU2249582003	L0168S186	BNG6Z63	ADAHX
I EUH	LU2249582185	L0168S194	BNG6Z85	ADIHX
I-3EU	LU1232088382	L0163W414	BF1FY17	ADIEX

EU: Euro    EUH: Euro Hedged

## Who We Are

Founded in 1964, Alger is widely recognized as a pioneer of growth-style investment management. Headquartered in New York City with affiliate offices in Boston and London, Alger provides U.S. and non-U.S. institutional investors and financial advisors access to a suite of growth equity separate accounts, mutual funds, and privately offered investment vehicles. The firm's investment philosophy, discovering companies undergoing Positive Dynamic Change, has been in place for over 50 years. In March 2017, Weatherbie Capital, LLC, a Boston-based investment adviser specializing in small and mid-cap growth equity investing, became a wholly-owned subsidiary of Alger.

## Multi-Manager Approach

Investors can access two premier growth equity managers through this multi-manager approach. These are proven teams with complementary approaches combined into a single strategy.

# ALGER

- Founded in 1964
- Growth equity pioneer
- Investing in dynamic change

# WEATHERBIE CAPITAL

- Founded in 1995; acquired by Alger in 2017
- Growth equity specialists
- Investing in Smaller Companies

## Process

### RESEARCH

Our fundamental, bottom-up research incorporates detailed financial analysis and field research as the Investment Teams proactively look for new investment ideas.

### DIALOGUE

Before ideas enter into a portfolio, Portfolio Managers test the conviction of the Analyst to ensure the new idea is worthy of a place in the portfolio. This dialogue continues if additional research is needed.

### PORTFOLIO CONSTRUCTION

Each discrete portfolio management team constructs a portfolio of the best growth-oriented long and short ideas in their respective universe. The combined portfolio is a diversified portfolio of long/short equities up and down the market cap spectrum.

### MONITORING

The Portfolio Managers regularly discuss the overall portfolio, optimal gross and net exposures, individual positions and allocation of portfolio assets.

### RISK MANAGEMENT

Risk Management is a critical component to the success of a long/short strategy. We continuously monitor and manage risk at the industry, sector and overall portfolio level using qualitative and quantitative methods.

**Average Annual Total Returns (%)** (as of 30 November 2023)

	1 Month	QTD	YTD	1Year	3Years	5Years	10 Years	Since Inception
<b>Class A EU</b> (Incepted 08 June 2015)	2.84	0.00	-3.14	-7.76	-0.64	6.53	—	5.20
<b>Class A EUH</b> (Incepted 20 January 2021)	5.54	-0.25	-3.86	-6.08	—	—	—	-9.10
<b>Class I EUH</b> (Incepted 20 January 2021)	5.72	0.22	-2.26	-4.41	—	—	—	-7.72
<b>Class I-3EU</b> (Incepted 08 June 2015)	3.02	0.43	-1.74	-6.30	0.66	7.96	—	6.60
<b>S&amp;P 500 Index</b>	9.13	1.74	20.80	13.84	9.76	12.51	—	(Since 20/01/21) 7.83
<b>S&amp;P 500 Index EUR</b>	5.72	1.21	18.16	7.43	13.17	13.35	—	(Since 08/06/15) 12.13
<b>HFRI Equity Hedge (Total) Index</b>	4.13	-0.28	6.29	5.59	4.11	6.58	—	(Since 31/01/21) 1.82 (Since 31/05/15) 4.88
<b>Total Annual Operating Expenses by Class</b>	A EU: 2.65%	A EUH: 2.81%	I EUH: 1.10%	I-3EU: 1.14%				
Most Recent KIID Date:	30/06/23	14/02/23	14/02/23	14/02/23				

Performance shown is net of fees and expenses.

The performance data quoted represents past performance, which is not an indication or a guarantee of future results. Investment return and principal value of an investment will fluctuate so that an investor's shares, when redeemed, may be worth more or less than their original cost. Fund returns include change in share price and reinvested distributions, as applicable, and do not reflect the deduction of any applicable taxes. Returns are calculated in U.S. dollars.

Only periods greater than 12 months are annualized.

**Monthly Net Returns (%)** (as of 30 November 2023 for Class I-3EU)

	Jan	Feb	Mar	Apr	May	Jun	Jul	Aug	Sep	Oct	Nov	Dec	YTD
<b>2023</b>	-0.72	1.51	-2.80	0.98	3.52	-2.34	-2.58	0.43	-1.66	-0.87	3.02	-	-1.74
<b>2022</b>	-6.19	1.40	0.46	-2.86	-4.66	1.05	4.59	1.35	0.92	2.23	-2.24	-4.64	-8.81
<b>2021</b>	1.40	4.25	1.15	2.67	-3.38	4.70	-0.05	4.60	1.31	3.62	-7.43	-1.62	11.00
<b>2020</b>	6.59	-0.62	-3.27	9.41	6.98	1.03	0.27	0.95	4.03	0.65	2.95	2.55	35.58
<b>2019</b>	8.70	4.35	3.17	1.13	-1.04	-0.16	4.20	1.16	-5.14	-3.64	4.11	-2.18	14.74
<b>2018</b>	0.10	-0.68	-0.88	2.47	8.30	0.45	-0.89	8.59	0.74	-7.04	-1.76	-5.20	3.12
<b>2017</b>	0.71	3.62	-0.29	-0.97	0.10	-1.47	-1.29	0.50	1.41	4.75	-2.46	-0.58	3.85
<b>2016</b>	-5.33	-0.88	-1.11	-1.46	4.23	-0.88	2.10	-0.32	0.76	-1.29	6.78	1.13	3.24
<b>2015</b>	-	-	--	-	-	-	2.49	-7.28	-1.20	4.30	4.87	-3.43	0.53

**Portfolio Exposure (%)** (as of 30 November 2023)

	Nominal
<b>Long Portfolio</b>	92.97
<b>Short Portfolio</b>	-44.41
<b>Total Gross</b>	137.38
<b>Total Net</b>	48.56
<b>Cash</b>	44.71

**Characteristics** (as of 30 November 2023)

	Long	Short
<b>Equity Holdings</b>	109	85
<b>Market Cap (Median-\$Bn)</b>	\$7.28	\$4.49
<b>Market Cap (Wtd Average-\$Bn)</b>	\$302.01	\$58.21
<b>Price/Book (Wtd Average)</b>	8.04	4.23
<b>P/E Ratio</b>	29.65	20.23
<b>Return on Equity (Median) (%)</b>	17.68	14.73
<b>EPS Growth (3-5 Yr Forecasted) (%)</b>	17.00	9.70

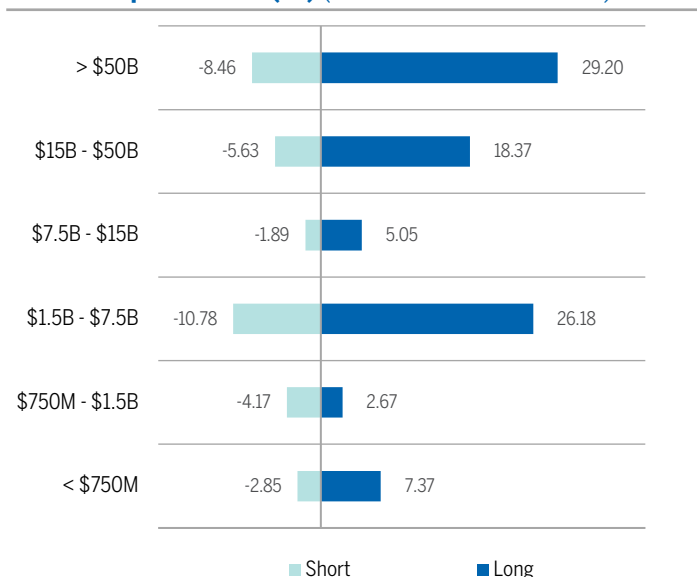
**Risk Metrics** (5 Years as of 30 November 2023 for Class I-3EU)

	Alger Dynamic Opportunities Fund	S&P 500 Index
<b>Alpha</b>	0.50	—
<b>Beta</b>	0.45	1.00
<b>Standard Deviation</b>	12.28	19.04
<b>Sharpe Ratio</b>	0.41	0.61
<b>R-Squared</b>	0.41	1.00
<b>Downside Capture (%)</b>	26.18	—

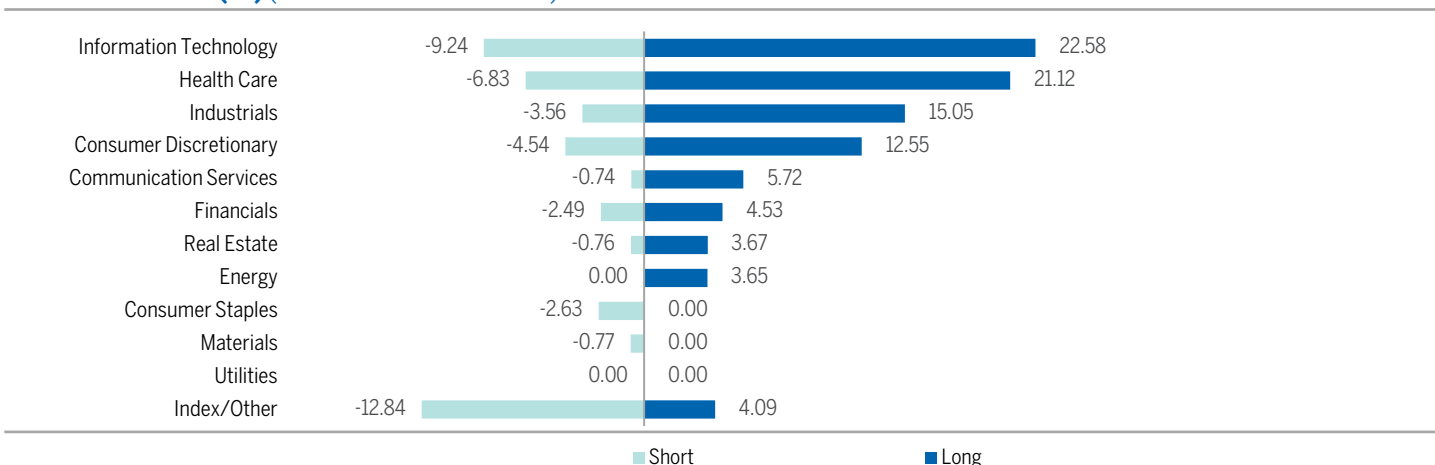
### Top Holdings (%) (as of 30 November 2023)

Long	
Microsoft Corporation	4.20
Amazon.com, Inc.	3.69
NVIDIA Corporation	3.61
TransDigm Group Incorporated	3.45
Meta Platforms Inc. Class A	2.54
Short	
iShares MSCI China A UCITS ETF	-2.20
IPG Photonics Corporation	-1.22
Adyen NV	-1.14
STAAR Surgical Company	-0.89
International Business Machines Corporation	-0.81

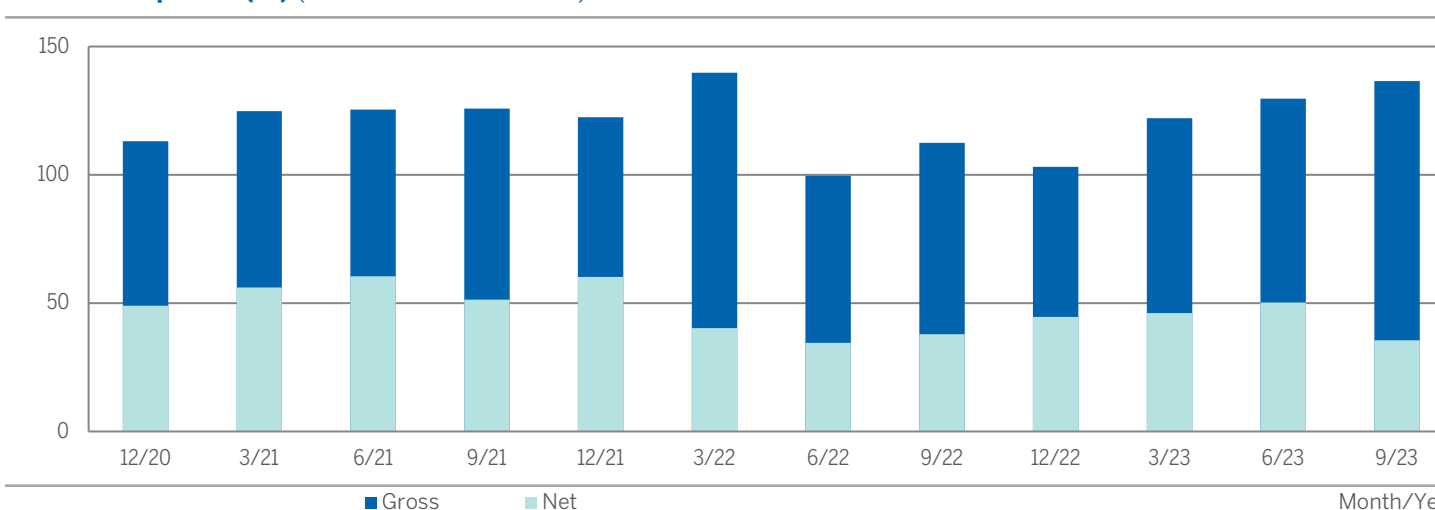
### Market Capitalization (%) (as of 30 November 2023)



### Sector Allocation (%) (as of 30 November 2023)



### Historical Exposure (%) (as of 30 November 2023)



**Risk Disclosures** - Investing in the stock market involves risks, including the potential loss of principal. Growth stocks may be more volatile than other stocks as their prices tend to be higher in relation to their companies' earnings and may be more sensitive to market, political, and economic developments. Local, regional or global events such as environmental or natural disasters, war, terrorism, pandemics, outbreaks of infectious diseases and similar public health threats, recessions, or other events could have a significant impact on investments. A significant portion of assets may be invested in securities of companies in related sectors, and may be similarly affected by economic, political, or market events and conditions and may be more vulnerable to unfavorable sector developments. Options and short exposure, gained through Total Return Swaps (TRS), could increase market exposure, magnifying losses and increasing volatility. Issuers of convertible securities may be more sensitive to economic changes. Investing in companies of small capitalizations involves the risk that such issuers may have limited product lines or financial resources, lack management depth, or have limited liquidity. Leverage increases volatility in both up and down markets and its costs may exceed the returns of borrowed securities. Foreign securities involve special risks including currency fluctuations, inefficient trading, political and economic instability, and increased volatility. Active trading may increase transaction costs, brokerage commissions, and taxes, which can lower the return on investment. At times, cash may be a larger position in the portfolio and may underperform relative to equity securities. Hedging may protect the investor against a fall in the value of currency, and conversely, it may also prevent an investor from profiting from an increase in the value of the currency. Hedging may significantly affect the performance of a hedged share class versus an unhedged share class. This material is not meant to provide investment advice and should not be considered a recommendation to purchase or sell securities.

Alger pays compensation to third party marketers to sell various strategies to prospective investors. Market capitalization and sector allocation are inclusive of cash but cash is not displayed in the chart. Top holdings are inclusive of cash but cash is not displayed as a top holding.

Risk metrics are statistical measures designed to show the expected risk for a portfolio and are not a measure of performance. Risk Metrics are sourced from Morningstar, an independent source, and include the impact of cash. Fred Alger Management, LLC, makes no representation that Morningstar is complete, reliable, or accurate.

**Alpha** measures the difference between a portfolio's actual returns and its expected performance, given its level of risk (as measured by beta). **Beta** measures a portfolio's sensitivity to market movements relative to a particular index; a portfolio with a beta of 1.00 would be expected to have returns equal to such index. **Downside Capture Ratio** measures a portfolio's performance in down markets relative to the benchmark. It is calculated by taking the portfolio's downside return and dividing it by the benchmark's downside return. A down-market is defined as those time periods in which market return is less than 0. **ROE** takes the weighted median of the holdings' return on equity which is calculated as net income divided by shareholders' equity. **R-Squared** reflects the percentage of a portfolio's movements that can be explained by movements in its benchmark. **Sharpe Ratio** was calculated as the portfolio's rate of return less the 3-month T-Bill's rate of return relative to the portfolio's standard deviation less the 3-month T-Bill's standard deviation for the period.

**Standard Deviation** measures how much the portfolio's return has deviated from its average historical return. Certain products may be subject to restrictions with regard to certain persons or in certain countries under national regulations applicable to such persons or countries. **NOT A PERSON AS SUCH TERM IS DEFINED IN REGULATIONS OF PERSONS, SECURITIES ACT OF 1933, AS AMENDED AND WHO ARE NOT PHYSICALLY PRESENT IN THE UNITED STATES.** See the country specific disclosures for information regarding the Funds' registration and the availability of the prospectus containing all necessary information about the product, the costs, and the risks which may occur. Characteristics are sourced from FactSet, an independent source, using all available data. Fred Alger Management, LLC, makes no representation that FactSet is complete, reliable, or accurate. With the exception of active share, the calculation excludes cash. Equity Holdings for the referenced product represents individual securities held, excluding private placements, private equity, rights, warrants, options, other derivatives, cash or cash equivalents and securities where the total market value in the portfolio is less than one dollar. A list of all holdings can be found at [www.alger.com](http://www.alger.com) for the applicable fund or composite. P/E Ratios were calculated using a weighted harmonic average. Sales Growth and EPS Growth rates were calculated using a weighted median. **Earnings per share (EPS)** is the portion of a company's earnings or profit allocated to each share of common stock. **Sales Growth** is a measure of the estimated sales growth rate of a company over the next 12-months.

**Gross exposure** equals the value of both a fund's long positions and short positions. **Net exposure** equals the value of the long positions less its short positions. Fred Alger Management, LLC has changed its methodology as of May 31, 2019 for classifying long put positions as short positions. Previously, such option positions had been treated as long positions. For purposes of calculating Exposure, an option's delta adjusted exposure will be used. Delta adjusted exposure represents the expected amount an option price will change if an option's underlying reference security changed by \$1. The formula for calculating delta adjusted exposure is the number option contracts multiplied by 100 (option multiplier) and multiplied by both the underlying security price and the option's delta (ranges from -1 to 0 for put options and 0 to 1 for call options based on whether option is in- or out-of-the-money). The S&P Indexes are a product of S&P Dow Jones Indices LLC and/or its affiliates and has been licensed for use by Fred Alger Management, LLC and its affiliates. Copyright 2023 S&P Dow Jones Indices LLC, a subsidiary of S&P Global Inc. and/or its affiliates. All rights reserved. Redistribution or reproduction in whole or in part are prohibited without written permission of S&P Dow Jones Indices LLC. S&P® is a registered trademark of Standard & Poor's Financial Services LLC and Dow Jones® is a registered trademark of Dow Jones Trademark Holdings LLC. Neither S&P Dow Jones Indices LLC, Dow Jones Trademark Holdings LLC, their affiliates nor their third party licensors make any representation or warranty, express or implied, as to the ability of any index to accurately represent the asset class or market sector that it purports to represent and neither S&P Dow Jones Indices LLC, Dow Jones Trademark Holdings LLC, their affiliates nor their third party licensors shall have any liability for any errors, omissions, or interruptions of any index or the data included therein.

**Each Fund is exposed to several types of risks. Please read the Fund's Key Investor Information Document ("KIID") and the prospectus for more information. Important Disclosures:** This document is directed at investment professionals and qualified investors (as defined by MiFID/FCA regulations). It is for information purposes only and has been prepared and is made available for the benefit of the investors. This document does not constitute an offer or solicitation to any person in any jurisdiction in which it is not authorized or permitted, or to anyone who would be an unlawful recipient, and is only intended for use by original recipients and addressees. The original recipient is solely responsible for any actions in further distributing this document and should be satisfied in doing so that there is no breach of local legislation or regulation. This document is not for distribution in the United States. Any opinions expressed herein are those at the date this material is issued. Data, models and other statistics are sourced from our own records, unless otherwise stated herein. We caution that the value of investments, and the income derived, may fluctuate and it is possible that an investor may incur losses, including a loss of the principal invested. Investors should ensure that they fully understand the risks associated with investing and should consider their own investment objectives and risk tolerance levels. Do not take unnecessary risk. **Past performance is not indicative of future performance.** Investors whose reference currency differs from that in which the underlying assets are invested may be subject to exchange rate movements that alter the value of their investments. **Important Information for All Investors:** Alger Management, Ltd. (company house number 8634056, domiciled at 85 Gresham Street, Suite 308, London EC2V 7NQ, UK) is authorized and regulated by the Financial Conduct Authority, for the distribution of regulated financial products and services. Fred Alger Management, LLC ("FAM") and/or Weatherbie Capital, LLC, U.S. registered investment advisors, serve as sub-portfolio manager to financial products distributed by Alger Management, Ltd. Alger Group Holdings, LLC (parent company of FAM and Alger Management, Ltd.) is not an authorized person for the purposes of the Financial Services and Markets Act 2000 of the United Kingdom ("FSMA") and this material has not been approved by an authorized person for the purposes of Section 21(2)(b) of the FSMA. **Important Information for Investors in Austria:** Funds are authorized for distribution by the Financial Market Authority. The latest

prospectus, KIID and annual and semi-annual reports are available free of charge on [www.lafrancise-am.com](http://www.lafrancise-am.com) or upon request to contact-vaueurmobilieres@lafrancise-group.com or from our Paying Agent: Erste Bank der oesterreichischen Sparkassen AG, Graben 21, 1010 Vienna Austria. **Important Information for Investors in Finland:** Funds are authorized for distribution by the Financial Supervisory Authority. The latest prospectus, KIID and annual and semi-annual reports are available free of charge on [www.lafrancise-am.com](http://www.lafrancise-am.com) or [www.morningstar.fi](http://www.morningstar.fi). **Important Information for Investors in Germany:** Funds are authorized for distribution by the Federal Financial Supervisory Authority. The latest prospectus, KIID and annual and semi-annual reports are available free of charge on [www.lafrancise-am.com](http://www.lafrancise-am.com) or upon request to contact-vaueurmobilieres@lafrancise-group.com or in from our Information Agent and Paying Agent: BNP PARIBAS Securities Services S.A. - Zweigniederlassung Frankfurt am Main, Europa-Allee 12, 60327 Frankfurt am Main. The prospectus is available in English and the KIID is available in German.

**Important Information for Investors in Italy:** Funds are authorized for distribution by the Commissione Nazionale per le Società e la Borsa. The latest prospectus, KIID and annual and semi-annual reports are available free of charge on [www.lafrancise-am.com](http://www.lafrancise-am.com), or [www.fundinfo.com](http://www.fundinfo.com) or from our Paying Agent BNP PARIBAS Securities Services, Via Ansperto no. 5 20123 Milan, Italy. **Important Information for Investors in Luxembourg:** Funds are authorized for distribution in Luxembourg by the Commission de Surveillance du Secteur Financier. The latest prospectus, the KIID and the annual and semi-annual reports are available free of charge on [www.lafrancise-am.com](http://www.lafrancise-am.com) or upon request to contact-vaueurmobilieres@lafrancise-group.com. **Important Information for Investors in Singapore:** The Alger SICAV is not authorized under section 280 of the Securities and Futures Act (Cap. 289) ("SFA") or recognised under section 287 of the SFA, and the Fund is not allowed to be offered to the public. This material and any other document issued in connection with the offer or sale of Units is not a prospectus as defined in the SFA and will not be lodged or registered as a prospectus with the Monetary Authority of Singapore. Statutory liability under the SFA in relation to the content of prospectuses does not apply. No offer or invitation for subscription or purchase of the Units, may be made, nor any document or other material (including but not limited to this material) relating to the Fund may be circulated or distributed, either directly or indirectly, to any person in Singapore other than to an institutional investor (as defined in section 4A of the SFA) pursuant to section 304 of the SFA. Where an offer is made to institutional investors pursuant to section 304 of the SFA, certain restrictions may apply to shares acquired pursuant to such an offer.

**Important Information for Investors in Spain:** Funds are authorized for distribution by the Comisión Nacional del Mercado de Valores. The latest prospectus, KIID and annual and semi-annual reports are available free of charge on [www.lafrancise-am.com](http://www.lafrancise-am.com) or can be obtained from All Funds Bank SA Calle Estafeta 6, Complejo Plaza de la Fuente, Edificio 3, La Moraleja, Spain. **Important Information for Investors in Sweden:** Funds are authorized for distribution by the Swedish Financial Supervisory Authority. The latest prospectus, the KIID and the annual and semi-annual reports are available free of charge on [www.lafrancise-am.com](http://www.lafrancise-am.com) or [www.morningstar.se](http://www.morningstar.se) or from our Paying Agent SKANDINAVISKA ENSKILDA BANKEN AB, Sergels Torg 2, SE-106 40 Stockholm, Sweden. **Important Information for Investors in Switzerland:** This is an advertising document. The state of the origin of the fund is Luxembourg. In Switzerland, the representative is ACOLIN Fund Services AG, Leutschenbachstrasse 50, CH-8050 Zurich, whilst the paying agent is NPB Neue Privat Bank AG, Limmatquai 17 am Bellevue, P.O. Box, CH-8024 Zurich. The prospectus, the key information documents or the key investor information documents, the fund regulation or the articles of association as well as the annual and semi-annual reports may be obtained free of charge from the representative. Past performance is no indication of current or future performance. The performance data do not take account of the commissions and costs incurred on the issue and redemption of units. Any of the Fund's short exposure ordinarily would be expressed through a total return swap ("TRS"), which might significantly affect the Fund's performance. Note that in addition to market risk, a TRS subjects the Fund to counterparty risk. For a more detailed description of risks that a TRS poses to the Fund, please refer to the prospectus. Class A EU shares are subject to a maximum front-end sales charge of up to 6.00%. Class A EUH shares are subject to a maximum front-end sales charge of up to 6.00%. Effective June 13, 2022, the secondary benchmark displayed was changed from the HFRI Equity Hedge (Total) Index – EUR to the HFRI Equity Hedge (Total) Index. No shares in the Alger SICAV or its sub-funds may be offered or sold to U.S. persons or in jurisdictions where such offering or sale is prohibited. The Alger SICAV is authorized by the Luxembourg Supervisory Authority as a UCITS and has only been authorized for public distribution in certain jurisdictions. This material does not form part of the prospectus of the Alger SICAV and is not, and should not be construed as, an offer, invitation or solicitation to subscribe for the shares in the Fund or other sub-funds of the Alger SICAV. The Alger SICAV is authorized by the Luxembourg Supervisory Authority as a UCITS and has only been authorized for public distribution in certain jurisdictions. It is the responsibility of any person in possession of this presentation to observe all applicable laws and regulations of any relevant jurisdiction with regard to sales and investment in the Fund or other sub-funds of the Alger SICAV. This material is authorized for distribution only when accompanied or preceded by a current prospectus of the Alger SICAV, which contains more information about investment objective, risks, charges, and expenses. Please read the prospectus carefully before investing. Sales of shares in the Alger SICAV, the subject of this fact sheet, are made on the basis of the prospectus only and this fact sheet does not constitute an offer of shares in the Fund or other sub-funds of the Alger SICAV. An investment in the Alger SICAV entails risks, which are described in the prospectus. Investors may not get back the full amount invested and the net asset value of the Alger SICAV will fluctuate with market conditions. Exchange rate fluctuations and Fund charges also affect the return to the investor. The holdings are subject to change. There is no assurance that the Alger SICAV's objectives will be achieved.

Fred Alger Management, LLC uses the Global Industry Classification Standard (GICS®) for categorizing companies into sectors and industries. GICS® is used for all portfolio characteristics involving sector and industry data such as benchmark, active and relative weights and attribution. The Global Industry Classification Standard (GICS®) is the exclusive intellectual property of MSCI, Inc. (MSCI) and Standard & Poor's Financial Services, LLC (S&P). Neither MSCI, S&P, their affiliates, nor any of their third party providers ("GICS Parties") makes any representations or warranties, express or implied, with respect to GICS or the results to be obtained by the use thereof, and expressly disclaim all warranties, including warranties of accuracy, completeness, merchantability and fitness for a particular purpose. The GICS Parties shall not have any liability for any direct, indirect, special, punitive, consequential or any other damages (including lost profits) even if notified of such damages. Sector and industry classifications are sourced from GICS. Historical classifications use GICS categories available as of the date of this presentation. Portfolio holdings may change and stocks of companies noted may or may not be held by one or more Alger portfolios from time to time. Investors should not consider references to individual securities as an endorsement or recommendation to purchase or sell such securities. Transactions in such securities may be made which seemingly contradict the references to them for a variety of reasons, including but not limited to, liquidity to meet redemptions or overall portfolio rebalancing.

**S&P 500® EUR:** An index of large company stocks considered to be representative of the U.S. stock market. Performance is reported in EUR. S&P 500® EUR Index performance does not reflect deductions for fees or expenses. **S&P 500®:** An index of large company stocks considered to be representative of the U.S. stock market. S&P 500 Index performance does not reflect deductions for fees or expenses. **The HFRI Equity Hedge (Total) Index ("HFRI")** publishes equally weighted monthly performance based on a number of hedge funds reporting to create a composite, net of fees. HFRI constituents may change without notice. HFRI, therefore, may have possibly lower risk, and differ in asset allocation, portfolio structure, and holdings. Unlike asset-weighting, the equal-weighting of HFRI presents a more general picture of performance of the hedge fund industry. Any bias towards the larger funds potentially created by alternative weightings is greatly reduced, especially for strategies that encompass a small number of funds. HFRI returns are as of the date shown based on the initial provided information and are subject to change. Please visit [www.alger.com](http://www.alger.com) for the most recent return information. Performance data for the HFRI Equity Hedge (Total) Index is only available on a month-end basis. As a result, since inception performance data for the index is as of the month end prior to the Fund's inception date if the Fund's inception date is on or prior to the 15th or is as of the Fund's inception month end if the Fund's inception date is after the 15th of the month. Investors cannot invest directly in any index. Index performance does not reflect deductions for taxes. **The performance data quoted represents past performance, which is not an indication or a guarantee of future results.**

**S&P 500® EUR:** An index of large company stocks considered to be representative of the U.S. stock market. Performance is reported in EUR. S&P 500® EUR Index performance does not reflect deductions for fees or expenses. **S&P 500®:** An index of large company stocks considered to be representative of the U.S. stock market. S&P 500 Index performance does not reflect deductions for fees or expenses. **The HFRI Equity Hedge (Total) Index ("HFRI")** publishes equally weighted monthly performance based on a number of hedge funds reporting to create a composite, net of fees. HFRI constituents may change without notice. HFRI, therefore, may have possibly lower risk, and differ in asset allocation, portfolio structure, and holdings. Unlike asset-weighting, the equal-weighting of HFRI presents a more general picture of performance of the hedge fund industry. Any bias towards the larger funds potentially created by alternative weightings is greatly reduced, especially for strategies that encompass a small number of funds. HFRI returns are as of the date shown based on the initial provided information and are subject to change. Please visit [www.alger.com](http://www.alger.com) for the most recent return information. Performance data for the HFRI Equity Hedge (Total) Index is only available on a month-end basis. As a result, since inception performance data for the index is as of the month end prior to the Fund's inception date if the Fund's inception date is on or prior to the 15th or is as of the Fund's inception month end if the Fund's inception date is after the 15th of the month. Investors cannot invest directly in any index. Index performance does not reflect deductions for taxes. **The performance data quoted represents past performance, which is not an indication or a guarantee of future results.**