

La Française Carbon Impact Floating Rates I

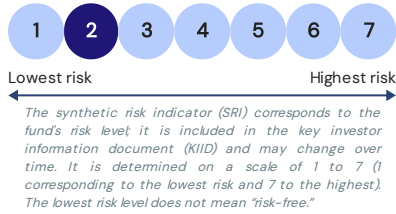


Registered in:

KEY FIGURES

NAV: 1,148.19€
Fund size: €192.95M

SYNTHETIC RISK INDICATOR



INVESTMENT HORIZON



CHARACTERISTICS

Legal form: Sub-fund of the French SICAV LA FRANCAISE
AMF Classification: International bonds and other debt securities
Inception date: 17/01/2020
Fund objective: 3-month Euribor index + 150bp
Allocation of distributable amounts: Capitalization
Currency: EUR
Valuation frequency: Daily
Clients: All subscribers
Major risks not taken into account by the indicator: credit risk, counterparty risk, Impact of techniques such as derivative investments

COMMERCIAL INFORMATION

ISIN code: FRO013439163
Bloomberg Ticker: LFGFRIE FP Equity
Cut-off time: D before 11:00 am CET
Settlement: D+2 business days
Min. initial subscription: 100 000 EUR
Eligibility for PEA: No
Max. subscription fees: 3%
Max. redemption fees: 0%
Management fees and other administrative and operating expenses: 0.47%
Custodian: BNP Paribas SA
Administrator: BNP Paribas SA
Management company: Crédit Mutuel Asset Management
Portfolio Manager(s): Fabien DE LA GASTINE, Aurore LE CROM, Emma GAYRARD
Morningstar rating: ★★★★★

Effective April 2, 2021: La Française Allocation is changing its name to La Française Carbon Impact Global Government Bonds to reflect a change in its management objective, investment strategy, benchmark index, and risk/return profile.

INVESTMENT STRATEGY

The aim of the fund, classified as "Bonds and other international debt securities" is to achieve, over the recommended 2-year investment period, a net performance above that of capitalised 3-month Euribor + 150 basis points by investing in a portfolio of issuers screened from the perspective of their compatibility with the energy transition strategy. In addition, the sub-fund undertakes to have a weighted average of the portfolio's greenhouse gas emissions per euro invested (scopes 1 and 2) at least 50% lower than that of the composite benchmark indicator: 50% Bloomberg Global Aggregate Corporate Index + 50% ICE BofAML BB-B Global High Yield Index. This objective of reducing greenhouse gas emissions shall be permanent and respected at all times.

NET PERFORMANCES

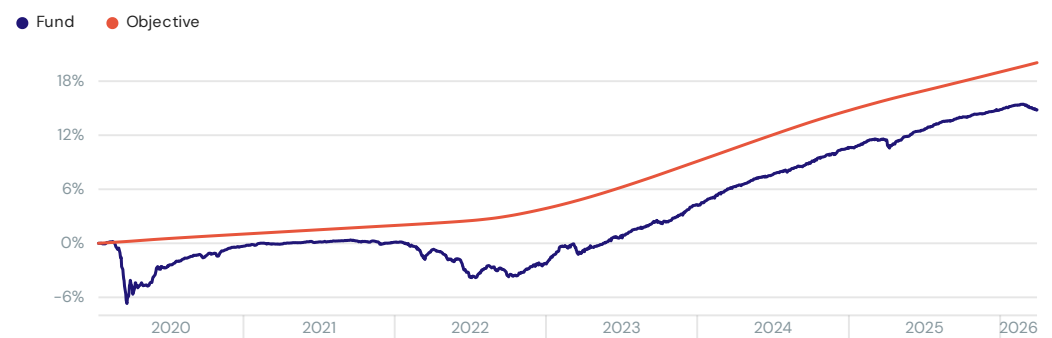
The figures quoted relate to previous years. Past performance is not a reliable indication of future performance. This performance does not take into account the fees and costs for the issue and redemption of units.

Cumulative	1 month	3 months	YTD	1 year	3 years	5 years	Inception
Fund	-0.52%	-0.01%	-0.01%	3.05%	15.74%	14.92%	14.82%
Objective	0.31%	0.87%	0.87%	3.60%	14.42%	18.56%	20.05%
Annualized				3 years	5 years	Inception	
Fund				4.99%	2.82%	2.25%	
Objective				4.59%	3.46%	2.99%	

HISTORICAL MONTHLY NET PERFORMANCES

		Jan.	Feb.	Mar.	Apr.	May	June	July	Aug.	Sept.	Oct.	Nov.	Dec.	Year
2026	Fund	0.37%	0.14%	-0.52%										-
	Objective	0.29%	0.27%	0.31%										-
2025	Fund	0.46%	0.44%	-0.10%	-0.09%	0.70%	0.41%	0.63%	0.28%	0.32%	0.34%	0.15%	0.27%	3.89%
	Objective	0.36%	0.31%	0.33%	0.31%	0.29%	0.29%	0.30%	0.28%	0.31%	0.30%	0.27%	0.32%	3.73%
2024	Fund	0.64%	0.66%	0.59%	0.39%	0.59%	0.23%	0.51%	0.41%	0.29%	0.66%	0.26%	0.60%	5.99%
	Objective	0.49%	0.43%	0.41%	0.49%	0.45%	0.40%	0.47%	0.41%	0.42%	0.39%	0.36%	0.38%	5.21%
2023	Fund	1.37%	0.63%	-0.54%	0.45%	0.55%	0.62%	0.69%	0.42%	0.42%	0.21%	0.85%	0.80%	6.66%
	Objective	0.34%	0.32%	0.37%	0.36%	0.44%	0.41%	0.44%	0.45%	0.43%	0.48%	0.45%	0.43%	5.01%
2022	Fund	-0.20%	-0.57%	-0.11%	-0.46%	-0.57%	-1.94%	0.69%	0.15%	-0.70%	0.22%	0.81%	0.34%	-2.34%
	Objective	0.08%	0.07%	0.08%	0.08%	0.10%	0.10%	0.12%	0.17%	0.20%	0.25%	0.27%	0.29%	1.84%

EVOLUTION OF PERFORMANCE SINCE INCEPTION



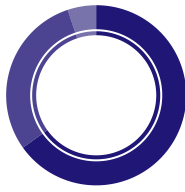
PERFORMANCE INDICATORS

	1 year	3 years	5 years	Since inception
Fund volatility	0.65%	0.76%	1.30%	Max. run-up: 23.73%
Sharpe ratio	2.47	2.56	0.74	Max. Drawdown: -6.87%
				Recovery: 441 days (the 10/06/2021)

La Française Carbon Impact Floating Rates I

ASSET TYPE

In % of AUM



Floating rate bonds	65.12%
Fixed rate bonds	29.75%
Cash	5.14%

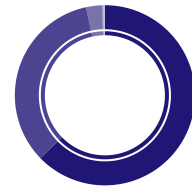
STRATEGY

Fixed income in %

Credit IG Euro	37.16%
Credit IG US	32.49%
Credit HY Euro	10.56%
Perpetual subordinates	7.53%
Non-perpetual subordinates	6.65%
Euro Core govies	1.69%
Credit Emerging	1.22%
Euro Peripheral govies	1.10%
Credit HY US	1.08%
Credit IG others	0.52%

CURRENCY

Fixed income in %



EUR	62.67%
USD	33.95%
AUD	2.86%
GBP	0.27%
SEK	0.25%

COUNTRY

Fixed income in %

USA	17.65%
France	15.52%
United Kingdom	12.48%
Germany	11.63%
Italy	6.48%
Canada	5.12%
Spain	4.63%
Netherlands	4.33%
Japan	3.07%
Denmark	2.70%
Others	16.39%

RISK INDICATORS

Modified duration	0.42	Weighted average life at call (years)	2.44
Credit sensitivity	2.92	Average issue rating	BBB
Yield to maturity	4.11%	Average issuer rating	BBB+
Yield to worst	3.87%	Average coupon	4.37%
Weighted Discount Margin (bp)	165	% of callable holdings	68.61%
Currency Hedging cost	-0.53%		

The posted rate of return a) does not constitute a promise of return; b) is likely to change over time depending on market conditions; c) is the weighted average of the instantaneous returns of the portfolio securities denominated in local currency; d) does not take into account any faults that may arise; e) gross instantaneous return excluding hedging costs. The currency hedging cost is an estimate of the cost of hedging over one year.

SECTORS

Fixed income in %

Financials	66.65%
Consumer, Cyclical	11.29%
Consumer, Non-cyclical	7.65%
Communications	4.09%
Technology	2.81%
Govies	2.79%
Industrials	2.51%
Utilities	1.26%
Government related	0.73%
Commodities	0.22%

RATINGS

Fixed income in %

● Issue rating ● Issuer rating

AA	5.03%	14.09%
A	43.86%	47.99%
BBB	31.61%	25.44%
BB	13.78%	7.43%
B	4.66%	4.83%
NR	1.06%	0.22%

MATURITIES

Fixed income in %

● Maturity date ● Maturity date at call

2026	2.79%	8.80%
2027	10.99%	23.03%
2028	18.28%	32.21%
2029	27.23%	14.85%
2030	12.54%	15.16%
2031	10.95%	4.41%
> 7 years	9.68%	0.72%
perp	7.53%	0.00%

PRINCIPAL ISSUERS

Excluding cash

Name	Country	Sectors	Issuer rating	Weight
Morgan Stanley	USA	Financials	A-	2.52%
Barclays PLC	United Kingdom	Financials	BBB+	2.20%
BNP Paribas	France	Financials	A+	2.13%
Goldman Sachs Group Inc	USA	Financials	A	2.11%
Royal Bank of Canada	Canada	Financials	AA+	1.98%
Société Générale	France	Financials	A+	1.90%
Nationwide Building Society	United Kingdom	Financials	A+	1.73%
Ubs Group Ag	Switzerland	Financials	A	1.71%
Citigroup Inc	USA	Financials	A-	1.65%
French gov.	France	Govies	AA-	1.61%

Number of issuers: 177

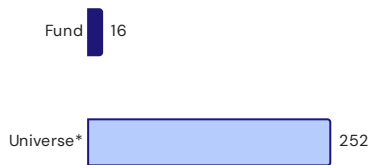
Top 10 issuers weight: 19.55%

La Française Carbon Impact Floating Rates I

*Universe: 50% Bloomberg Global Aggregate Corporate, 50% ICE BofAML BB-B Global High Yield Index

CARBON INTENSITY

equiv. CO2 tons / M€ revenues



CARBON IMPACT SCORE

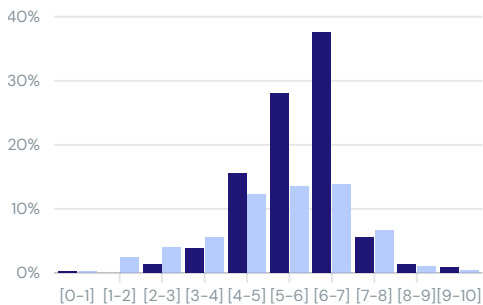
Min 1 / Max 10

	Fund	Universe*
Carbon Impact coverage	98.99%	94.52%
Carbon Impact score	5.78	5.15

DISTRIBUTION OF CARBON IMPACT SCORES

Min 1 / Max 10

● Fund ● Universe*



SECTOR CARBON FOOTPRINT

equiv. CO2 tons / M€ invested

Sector	Weight	Carbon footprint	Carbon footprint relative to universe*
Consumer, Cyclical	10.71%	2	-3
Utilities	1.20%	1	-10
Consumer, Non-cyclical	7.26%	1	-1
Commodities	0.21%	1	-12
Financials	63.23%	0	0
Communications	3.88%	0	0
Technology	2.67%	0	0
Industrials	2.38%	0	-5
Energy	0.00%	0	-14
Other	3.34%	0	0
Total		5	-45

BEST CARBON IMPACT SCORES

Min 1 / Max 10

Issuers	Weight	Carbon Impact score
EIRCOM FINANCE DAC	0.13%	9.80
Cirsa Finance International SA	0.39%	9.23
LION/POLARIS LUX	0.34%	9.21
EDF	1.04%	8.49
Koninklijke Kpn Nv	0.05%	8.43

WORST CARBON IMPACT SCORES

Min 1 / Max 10

Issuers	Weight	Carbon Impact score
ROSSINI SARL	0.17%	1.00
Rabobank Nederland – New York Branch	0.73%	2.46
Nykredit Realkredit A/S	0.56%	2.62
Q-PARK HOLDING I BV	0.31%	3.17
National Bank Of Canada	0.42%	3.47

CARBON FOOTPRINT

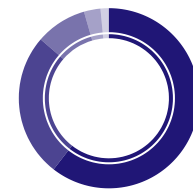
equiv. CO2 tons / M€ invested



Carbon footprint reduction against universe **96%**

COMPANIES THEMATIC BREAKDOWN

In % of AUM



Low Carbon	57.40%
Transition aligned	24.48%
Ambition required	8.74%
Winners	2.82%
Not classified	1.42%

MAIN GREEN BONDS

Issuers	%	Carbon Impact score
UNICAJA BANCO SA	0.38%	5.49
Unicredit	0.38%	6.01
Volvo Car Ab	0.28%	6.96
Volkswagen International Finance NV	0.11%	6.82
EDP S.A.	0.11%	6.83

Green Bonds: **1.49%**

La Française Carbon Impact Floating Rates I

*Universe: 50% Bloomberg Global Aggregate Corporate, 50% ICE BofAML BB-B Global High Yield Index

IMPACT DATA

based on a 200M€ portfolio (Data : <https://www.epa.gov/energy/greenhouse-gas-equivalencies-calculator>)



Carbon footprint

96%
lower
6 tCO₂/m vs 131 tCO₂/m*



Annual energy savings of

3 200
houses



20 000

trees to grow for 10 years to compensate the
invested amount of €200m
440 000 if invested in the universe*



5 400

cars taken off the road



1 090 000

recycled garbage bags

DEFINITIONS OF EXTRA-FINANCIAL TERMS

Carbon Impact Score: The Carbon Impact score is calculated as a simple average of indicators for each category of the TCFD (Task Force on Climate-Related Financial Disclosures) at company level, and can be adjusted to reflect additional information available to the ESG analysts as appropriate.

Carbon Intensity: The carbon intensity of a company is calculated as the ratio between the volume of greenhouse gas (GHG) emissions of the company in tonnes of CO₂eq and the turnover.

Carbon footprint: Aggregate emissions from the issuer for scopes 1 and 2 per million euros of enterprise value. Emissions data represents the final value revised and approved by ISS based on available sources.

Green Bonds : A green bond is issued by a company and its use of proceeds are used to finance or refinance projects which are compliant with the "green bond principles" eligible use of proceeds taxonomy

Low Carbon : The low carbon classification results from a proprietary carbon analysis. If a company belongs to this category it means that its carbon intensity pathway is well below the reference 2 degrees scenario (not to say 1.5°C) of its sector.

Transition aligned : The transition aligned classification results from a proprietary carbon analysis. If a company belongs to this category it means that its carbon intensity pathway is aligned or below the reference 2 degrees scenario of its sector.

Ambition required : The ambition required classification results from a proprietary carbon analysis. If a company belongs to this category it means that the company is doing material efforts to curb CO₂ emissions but that its carbon intensity pathway is not yet aligned or below the reference 2 degrees scenario of its sector.

La Française Carbon Impact Floating Rates I

DISCLAIMER

Disclaimer: Simplified and non-contractual document.

Document for the use of both non-professional and professional investors – Please read the disclaimer on the last page – Non contractual document. Before subscribing please refer to the fund prospectus available on the internet : www.creditmutuel-am.eu. Data : Crédit Mutuel Asset Management, Bloomberg

The information contained in this document (themes, investment process, portfolio holdings, etc.) is valid on the date indicated but is subject to change. No reference to a ranking rating or award constitutes a guarantee of future results and is not constant over time.

The information contained in this document does not constitute an offer or solicitation to invest, nor does it constitute investment advice, a recommendation on specific investments or legal advice. The figures are not contractually binding and are subject to change.

Information on the fund, including performance calculations and other data, is provided by the management company at the date of the document. These performances do not take into account fees and expenses relating to the issue and redemption of units or taxes. The value of investments and the income derived from them may go down as well as up and the investor may not get back the full amount originally invested. Changes in exchange rates may also affect the value of the investment. For this reason, and given the initial charges usually levied, an investment is not generally suitable as a short-term investment. Fees and expenses have an adverse effect on the fund's performance.

Past performance is no guarantee of future performance and is not constant over time. Investing in a UCI can be risky, the investor may not get back the money invested. If you wish to invest, a financial adviser will be able to help you assess the investment solutions that match your objectives, your knowledge and experience of the financial markets, your assets and your sensitivity to risk, and will also explain the potential risks.

The tax treatment of holding, acquiring or disposing of shares or units in a fund depends on the tax status or treatment specific to each investor and may be subject to change. Potential investors are strongly encouraged to seek advice from their own tax advisor.

Although every care has been taken in the preparation of this document, we make no representation or warranty of any kind, express or implied (including to third parties) as to the accuracy, reliability or completeness of the information contained herein. Any reliance placed on the information contained on this page shall be at the sole discretion of the recipient. This content does not provide sufficient information to support an investment decision.

The Key Information Document (KID), the management processes and the prospectus are available on the management company's website (www.creditmutuel-am.eu). The KID must be provided to the subscriber prior to each subscription.

Distribution of this document may be limited in certain countries. The UCI may not be marketed in all countries and the offer and sale of the UCI to certain types of investors may be restricted by the local regulatory authority

This UCI may not be offered, sold, marketed or transferred in the United States (including its territories and possessions), nor may it directly or indirectly benefit a US natural or legal person, US citizens or a US Person.

This document may not be reproduced or used without the express authorisation of the management company. The names, logos or slogans identifying the management company's products or services are the exclusive property of the management company and may not be used in any way whatsoever without the prior written consent of the management company.

Morningstar and/or Lipper ratings are subject to copyright. All rights reserved. The information presented: (1) is the property of Morningstar and/or Lipper and/or their information providers (2) may not be reproduced or redistributed (3) is presented without any guarantee of accuracy, completeness or timeliness. Neither Morningstar and/or Lipper nor its content providers shall be liable for any damages or losses arising from any use of this information.

Important information for investors in Germany

Information Agent and Paying Agent: BNP PARIBAS Securities Services S.A. – Frankfurt am Main branch, Europa-Allee 12, 60327 Frankfurt am Main

Important information for investors in Spain

Local representative: Allfunds Bank SA Calle Estafeta 6 – Complejo Plaza de la Fuente, Edificio 3, La Moraleja, Spain

Important information for investors in Italy

Local distributor: BNP PARIBAS Securities Services, Via Ansperto no. 5 20123 Milan, Italy

Important Information for investors in the United Kingdom

Information Agent and Paying Agent: BNP Paribas Securities Services London, 5 Moorgate, London EC2R 6PA United Kingdom

Important information for investors in Switzerland

Local Representative: ACOLIN Fund Services AG, Leutschenbachstrasse 50, CH-8050 Zurich and Local Paying Agent: NPB Neue Privat Bank AG, Limmatquai 1/am Bellevue, P.O.Box, CH-8024 Zurich.

Important information for investors in Singapore

The fund is not authorised under Section 286 of the Securities and Futures Act (Cap. 289) ("SFA") or recognised under Section 287 of the SFA, and the Fund is not permitted to be offered to the public. This material and any other document issued in connection with the offering or sale of Units is not a prospectus as defined in the SFA and will not be filed or registered as a prospectus with the Monetary Authority of Singapore. Legal liability under the SFA for the content of prospectuses does not apply. No offer or invitation to subscribe or purchase units may be made, nor may any document or other material (including but not limited to, such material) relating to the Fund may be disseminated or distributed – directly or indirectly – to any person in Singapore other than an institutional investor (as defined in Section 4A of the SFA) in accordance with Section 304 of the SFA. When an offer is made to institutional investors in accordance with Article 304 of the SFA, certain restrictions may apply to the shares acquired under such an offer.

SFDR Classification : The Sustainable Finance Disclosure Regulation aims to direct capital flows towards more responsible investments, to ensure transparency, consistency and quality of information for investors and thus to allow a comparison of the different investment vehicles. It applies to all financial market players but also to products.

3 categories of products:

1/ Automatically all funds are classified in Article 6, without sustainability objective.

2/ Article 8 applies for funds that promote ESG characteristics.

3/ Article 9 goes further, with a sustainable and measurable investment objective. That is, the funds invest in an activity that contributes to an environmental or social objective, such as reducing CO2 emissions or fighting inequality.

For more information on sustainability issues, please visit the management company's website (www.creditmutuel-am.eu)

Manager: Current management team, subject to change with time.

Issue rating: corresponds to the most recent issue rating between S&P and Moody's or, failing that, of the issuer.

Issuer rating: corresponds to the most recent issuer rating between S&P and Moody's.

The management company does not exclusively or mechanically use the ratings established by rating agencies and performs its own credit analysis. Ratings are determined on a case-by-case basis on the basis of an internal methodology and are subject to change.

DEFINITIONS

The synthetic risk indicator makes it possible to assess the level of risk of this product compared to others. It indicates the likelihood of this product incurring losses in the event of market developments or our inability to pay you.

Volatility is a measure for the strength of fluctuation in the performance of the fund during a certain period. The higher it is the more volatile and therefore risky a fund is.

The Sharpe Ratio measures the average return earned in excess in dependency of the risk relative to a benchmark (risk-free rate). For the assessment of this key figure, the attainable riskfree yield is subtracted from the yield actually earned. The result is divided by the risk that has been taken by the fund. A Sharpe Ratio > 1 indicates that an excess yield compared to the riskfree money market investment has been earned. At the same time, it shows the ratio of this excess yield to the risk taken. In reverse, a negative Sharpe Ratio (<0) illustrates that the money market interest rate has not been outperformed.

Max.Drawdown: Historical maximum loss that would have been incurred by an investor who invested at the highest and exited at the lowest

The recovery is the time needed to recover the maximum loss (max drawdown).

Modified duration: makes it possible to measure the percentage change, upward or downward, of the price of a bond or of the net asset value of a bond UCITS, induced by a 1% fluctuation of market interest rates.

Credit sensitivity: is expressed for a 100 bp variation of credit spread.

Discount margin: is the average expected return of a floating-rate bond that's earned in addition to the index underlying. The size of the discount margin depends on the price of the floating- or variable-rate bond.